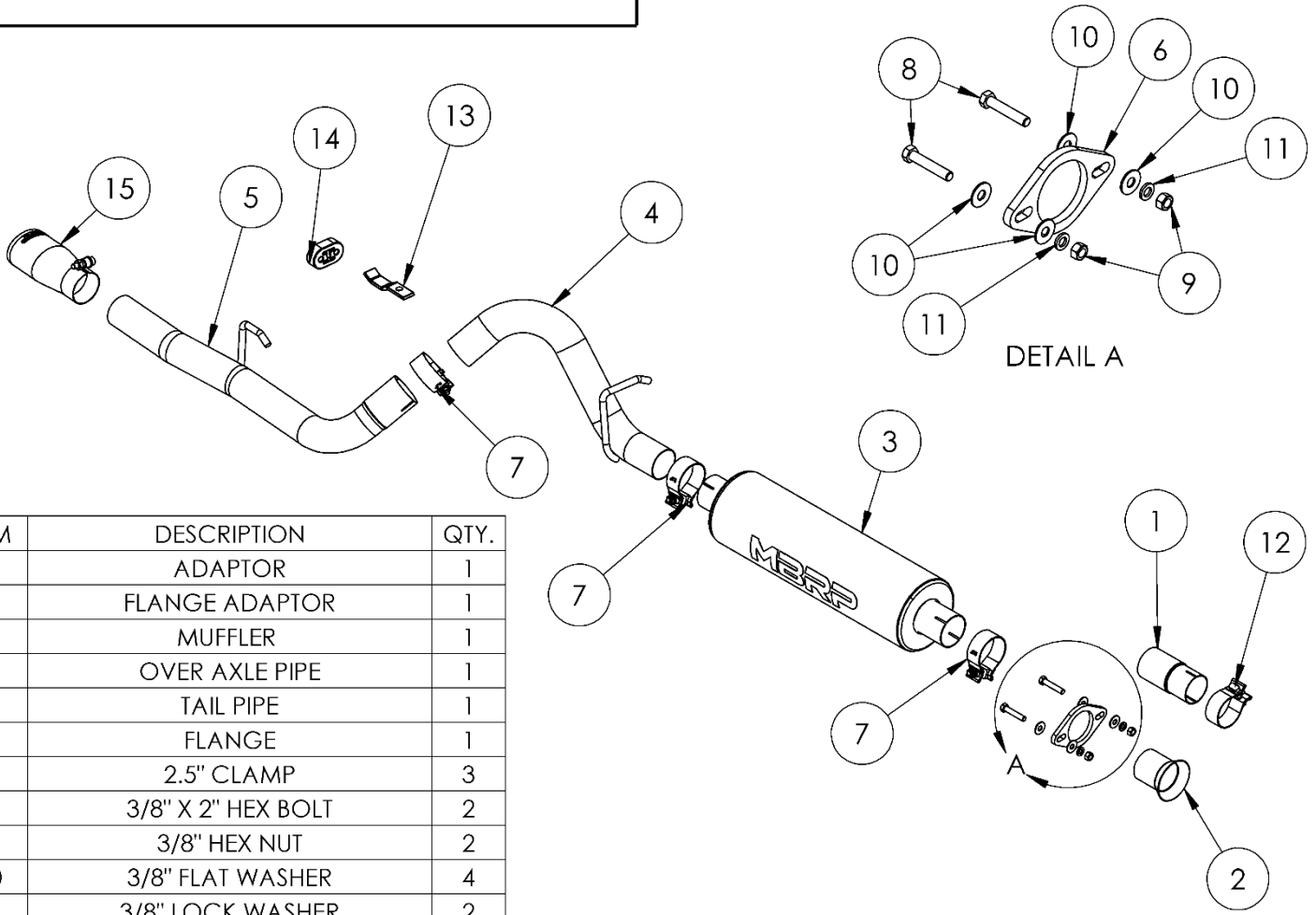


# S5534

1986-2000 JEEP CHEROKEE 2.5L,  
1987-2001 JEEP CHEROKEE 4.0L,  
2.5" SINGLE REAR EXIT

# MBRP®



| ITEM | DESCRIPTION              | QTY. |
|------|--------------------------|------|
| 1    | ADAPTOR                  | 1    |
| 2    | FLANGE ADAPTOR           | 1    |
| 3    | MUFFLER                  | 1    |
| 4    | OVER AXLE PIPE           | 1    |
| 5    | TAIL PIPE                | 1    |
| 6    | FLANGE                   | 1    |
| 7    | 2.5" CLAMP               | 3    |
| 8    | 3/8" X 2" HEX BOLT       | 2    |
| 9    | 3/8" HEX NUT             | 2    |
| 10   | 3/8" FLAT WASHER         | 4    |
| 11   | 3/8" LOCK WASHER         | 2    |
| 12   | 2.25" CLAMP              | 1    |
| 13   | TAIL PIPE HANGER BRACKET | 1    |
| 14   | INSULATOR                | 1    |
| 15   | EXHAUST TIP              | 1    |

## PLEASE READ BEFORE STARTING INSTALLATION

While MBRP has made every effort to ensure that all components of this system are of superior quality and properly packaged, it is the installer's responsibility to ensure the following before removal of the factory exhaust:

- that ALL components shown above are present.
- that ALL mating components fit together.
- that there are no damaged components.
- that the system you have purchased is appropriate for your vehicle year, model and configuration.
- that the system will not interfere with any modifications previously installed or planned.
- that you have read and understand these instructions.

If you have any questions or are uncertain about any aspect of the installation of this system to your vehicle please contact your dealer before commencing installation.

# MBRP®

## Removal of Stock System



Figure 1



Figure 2



Figure 3



Figure 4



Figure 5

1. Apply a penetrating lubricant liberally to all exhaust fasteners, hangers and rubber insulators. **Refer to Figure 1.**

2. Cut **Over Axle Pipe** after **Muffler** and remove **Hanger** from the rubber insulator. **Refer to Figure 2.**

3. Cut stock **Tail Pipe Hanger** off and remove the remaining half from the frame. Remove **Over Axle/Tail Pipe**. **Refer to Figure 2.**

4. For 1986-1999 models, remove the clamp that attaches the **Muffler** to the **Catalytic Converter** and remove the **Muffler**. **Refer to Figure 3.**

For 2000-2001 models remove the stock hardware on the **Flanges** between the **Catalytic Converter** and **Muffler**. **Refer to Figure 4.** Now remove the **Muffler**.

## Installation of MBRP Performance Exhaust

1. For 1986-1999 models, slide a **2.25" Clamp** over the **Adaptor** and install **Adaptor** on the **Catalytic Converter**. **Refer to Figure 5.** For 2000-2001 models, slide the **Flange** through the **Flange Adaptor** then bolt to the stock **Flare Flange** using the **Hardware** provided. **Refer to Figure 6.**

# MBRP®



**Figure 6**

2. Slide a **2.5” Clamp** on the **Muffler** inlet and attach the **Muffler** to the **Adaptor**. Refer to **Figure 7**.



**Figure 7**

3. Remove the bolt from the frame in front of the stock tail pipe hanger. Then attach the **Tail Pipe Hanger Bracket** and **Insulator**. Refer to **Figure 8**.



**Figure 8**

4. Slide a **2.5” Clamp** on the **Over Axle Pipe** and install into the **Muffler**. Install the hanger into the existing rubber insulator. Refer to **Figure 9**.



**Figure 9**

6. Install the **Tip** onto the **Tail Pipe** as desired. Refer to **Figure 10**.



**Figure 10**

7. Tighten all hardware and clamps, starting at the front and working rearward to secure the system. Check along the full length of the exhaust system to ensure there is adequate clearance for fuel lines, vent lines, brake lines, frame, bodywork, suspension and any wiring, etc. If there is any interference detected, relocate or adjust to provide adequate clearance. Ensure all clamp connections are secure and components are unable to rotate or slide. Band clamps require approximately 45 lb-ft (60 N-m) of torque. Verify clearances, system security and band clamp torque after 30- 60 miles (50-100 km) of driving.

**Congratulations!** You are ready to begin enjoying the improved performance and driving experience of your **MBRP** Performance Exhaust system. We hope you enjoy your purchase!